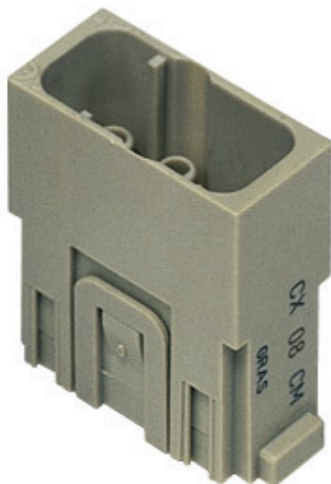



Product Sheet

Part Number: CX 08 CM



Family	modular units series MIXO
Version	crimp connections
Series	CX
Product type	for male contacts 16A
Model	male insert
Reference standard	EN 61984 (2001-11)
No. of poles	8 poles
Voltage (V)	400V
Current (A)	16A (A.C./D.C.)
Quality mark	
IP degree of protection	IP20 degree of protection without enclosure; IP65, IP66, IP67, IP68 (EN 60529) and IP69K (DIN 40050 - 9) with enclosure
Fixing centre distance	1 module
Impulse withstand voltage	6kV
Pollution degree	3

The information and the dimensions contained are not binding and may be changed without prior notice.
The drawing's dimensions are in mm.

Notes

the modular inserts must be installed in suitable frames which in turn are installed in traditional housings or COB panel support

CX 08 C inserts:

- characteristics according to EN 61984:
(16A 400V 6kV 3)
(16A 400/690V 6kV 2)
- footprint 1 modules
- for maximum current load, see the insert load curve section
- for contact crimping instructions, please see the crimping tool section (16A contacts, CCF, CCM and CC...AN series)

The information and the dimensions contained are not binding and may be changed without prior notice.
The drawing's dimensions are in mm.